

# RagaMuffin Standard

## The Head (Shape/Size)

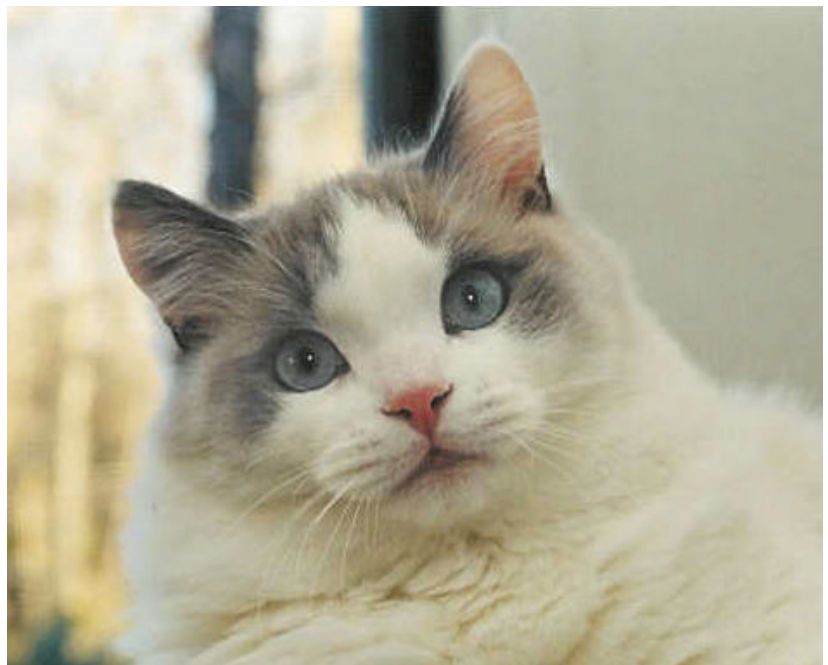
By Kim Clark

In the next several issues of Muffin Mews we will be discussing the RagaMuffin Standard, piece by piece. I think the one thing other than its wonderful disposition and size that makes a Muffin stand out in a crowd is the sweet expression caused by the shape of its head & face. So lets start by discussing the head. In the next issue we will discuss the eyes and ears.

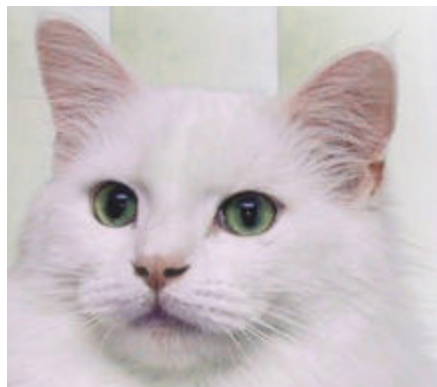
First I will include the Standard for the Head (Shape/Size):

### Head (Shape/Size)

*The head is a broad modified wedge, with a rounded appearance. The forehead should be moderately rounded. Muzzle is round, slightly shorter than moderate in length, tending to broadness. The chin is firmly rounded, reflecting a proper bite. There is puffiness to the whisker pad, which results in the characteristic "sweet look" of the RagaMuffin. Cheeks are full. In profile, there is an obvious nose dip, giving the impression of a scoop rather than a break. Neck is short, heavy and strong particularly in older males. An allowance is made for jowliness in mature adult males*



The head is a broad modified wedge with a rounded appearance... The forehead should be moderately rounded. This does not mean the head is round... There is puffiness to the whisker pad, which results in the characteristic "sweet look" of the RagaMuffin. Below see other examples also showing the characteristic "sweet expression" of the ragamuffin at various ages.



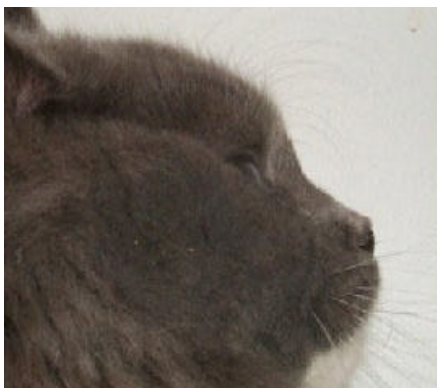
**The head is a broad modified wedge with a rounded appearance. This does not mean the head is round. The modified wedge is broad and not sharply angled. The broadness and the surrounding fur add to the illusion of roundness. The forehead has a gentle curve. It is a very gentle transition from the scoop of the nose to a gentle convexly curved forehead & top head. We have seen a trend in the show ring for the judges to pick the roundest or most domed forehead and that is not what is meant in our description of the forehead. We want no doming or extremes in the head.**

**The head is Medium in size compared to the body. Some may argue that the head is large... saying we are a large cat with a large head. When you compare the head to the size of the body though, it is in proportion to the body: not large for the size of the cat.**

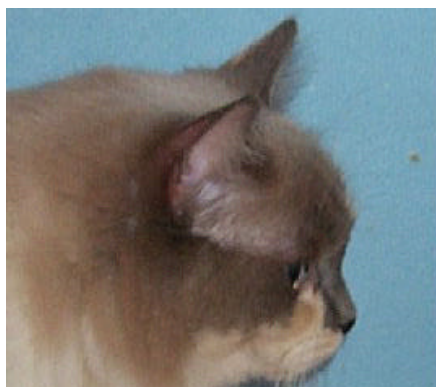
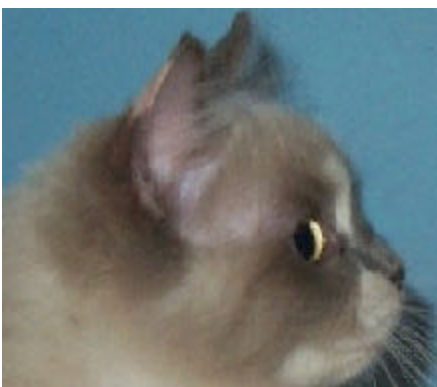
**The muzzle when viewed straight on looking directly at the nose, whisker pads and chin is round. The full whisker pads and firmly rounded chin add to the appearance of roundness to the muzzle. It is slightly shorter than moderate in length but not too short. The RagaMuffin should have a proper bite. (no overbite no underbite). The whisker pads are well rounded giving them a puffy appearance that results in the typical sweet expression of the RagaMuffin. (See figure 1 again for the puffy whisker pads.)**

**Cheeks are full. A lot of people think of the whisker pads as cheeks but really the checks and cheek bones are just above the whisker pads.**

**The nose in profile has an obvious dip. There is no break, but rather more of a scoop in appearance. Sometimes the fur can give the appearance of a break but when you run your finger from the tip of the nose to the forehead you should feel the gentle scoop. They do not have a roman nose so you should not feel a slight bump & then the scoop. In kittens you will often see slightly less of a dip then in an older cat.**



**“The nose in profile has an obvious dip. There is no break, but rather more of a scoop in appearance. Sometimes the fur can give the appearance of a break but when you run your finger from the tip of the nose to the forehead you should feel the gentle scoop.”**



**From upper left to right: 6 month old male and then the same kitten at 1 year 2 months. From lower left to right a 4 month old female and then the same kitten at 1 year 3 months**